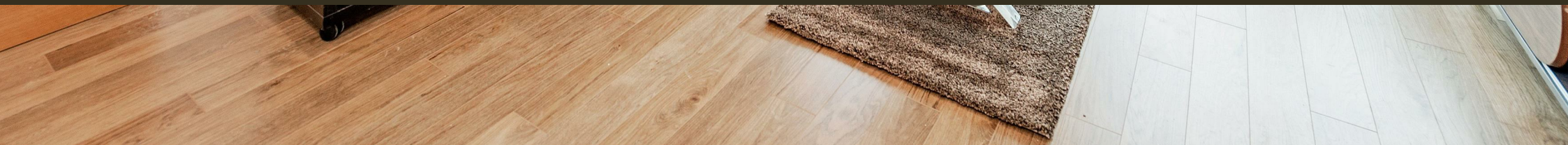




9 Albert Embankment, London  
SE1

GARTONJONES.COM



# 9 Albert Embankment, London , SE1

## £700 Per Week

A bright and spacious 2 double bedroom, 1 bathroom apartment of approx. 717sq.ft (66.6sq.m) available to rent in 9 Albert Embankment, a modern riverside development located on the South bank of the River Thames. The property benefits from an open-plan reception room, modern integrated kitchen, a balcony & wood flooring.

9 Albert Embankment has a 24-hour concierge and on-site convenience store and is within easy reach of the rail/tube links of Vauxhall as well as having a frequent bus service into the city on the doorstep. The River Park Plaza Hotel is also located next door and has a taxi rank providing further transport services.

Please note furniture may differ to that shown in the current photos.

- Electricity Supply — Mains | Water Supply — Mains | Sewerage — Mains | Heating — Electric Radiators
- Broadband & Mobile Signal : Check Coverage via Ofcom
- Parking: No Parking Included
- Lift Access
- Building Safety: EWS1 Available on Request
- Council Tax Band E (London Borough of Lambeth)
- 5 Week Security Deposit
- Holding deposit equivalent to 1 week of rent
- Rent to be payable monthly in advance
- EPC Rating C (74)

- 2 Bedrooms
- 717sq.ft (66.6sq.m)
- 1 Bathroom
- Open Plan Reception
- Modern Integrated Kitchen
- Top Floor Apartment
- Balcony
- Southeast Aspect
- 24 Hour Concierge
- 0.5 Miles from Vauxhall Station

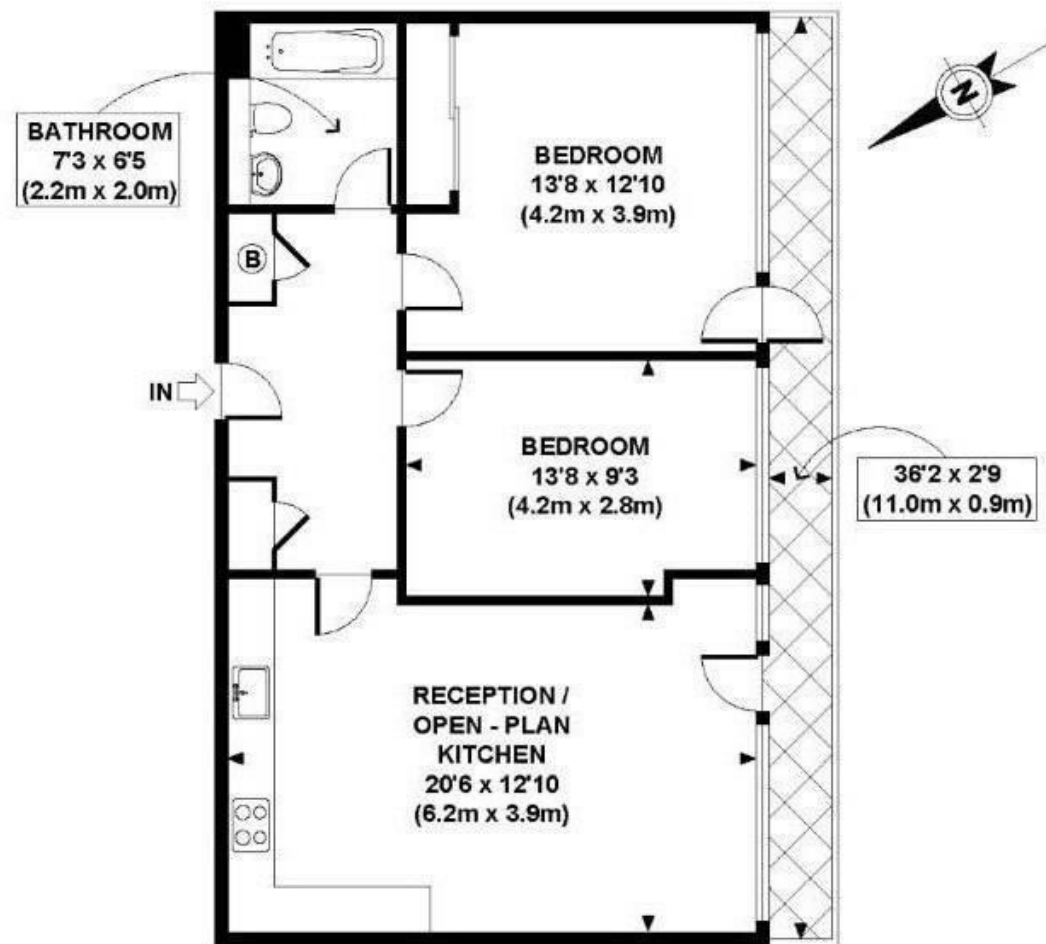
## GARTON JONES.COM

9 Albert  
Embankment  
London  
SE1 7SP

Lettings:  
+44 (0) 20 7735 1888  
nineelms@gartonjones.com  
www.gartonjones.com







**GROSS INTERNAL  
FLOOR AREA 717 SQ FT**

**APPROX. GROSS INTERNAL FLOOR AREA 717 SQ FT/ 67 SQ M**

